



Utilising HIA for planning rural health services in New South Wales, Australia

Karla Calleja
Service Planner,
Greater Southern Area Health Service,
New South Wales, Australia

Better health for rural people



Overview of presentation

- Setting the scene
- The HIA project
- Driving issues
- Application to service planning
- Lessons learnt
 - What works? What doesn't?



Greater Southern Area Health Service



- GSAHS state health service in southern NSW, Australia
- Hospital, public health, health promotion services
- **166,000 sq km**
- 468,000 residents



Planning in GSAHS

- Support Executive and staff to meet the current and future health service needs of the community
- Development of service plans
 - Review population information
 - Current and projected demand
 - Local context
 - Developed in consultation with managers, staff and community members



Pressing challenges



- Delivering safe services
- Lack of workforce
- External agency nursing staff
- Appropriate services vs. history
- Small hospitals with low activity





Date of Attendance	Time of Arrival	Time of Discharge	Triage Category	Presenting Problem	Sex	Age	Referral Source	Time MO Contacted	Time Seen by MO	Time Seen by Nurse only	Time Departed	Hours of Hospital Stay	Days of Hospital Stay	Ambulance Transfer out Y/N	Urgent Y/N	Third Party Y/N	Medicare Y/N	DVA Y/N	VMO Privately Referral Y/N	
6-10-7	1200	1210	5	Fur path	F	N	23	11/22	AVE	-	-	-	Y	Y	-	-	-	-	-	-
8-10-7	1300	1330	5	Fur Path	F	U	23	11/16	AVE	-	-	-	Y	-	-	-	-	-	-	-
9/10/7	105	105	5	Pain medicine lab	F	N	23	17/2	AVE	-	-	-	Y	N	-	-	-	-	-	-
9/10/7	1545	1545	3	Laceration @ leg	M	N	23	15/2	AVE	-	-	-	Y	N	-	-	-	-	-	-
10/10/7	0950	0950	5	Dressing tolerance	M	N	27	15/2	AVE	-	-	-	Y	N	N	-	-	-	-	-
10/10/7	1355	1355	3	Pain on hand	M	N	23	13	AVE	-	-	-	Y	-	-	-	-	-	-	-
11/10/7	145	150	3	HAND INJURY FROM AUGURE	M	U	23	13	AVE	1150	1150	P	N	N	Y	N	-	-	-	-
11/10/7	1652	1650	4	skin tear to eye	F	N	23	13	AVE	-	-	-	Y	N	N	N	N	N	N	N
11/10/7	1657	1657	3	fall	F	N	23	13	AVE	1710	1830	P	N	N	N	N	N	N	N	N
11/10/7	1900	1900	5	bruin to arm	F	N	23	13	AVE	-	-	-	Y	-	-	-	-	-	-	-
12-10-7	1420	1420	5	Sore hand	M	N	23	13	AVE	-	-	-	U	-	Y	-	-	-	-	-
12-10-7	1520	1700	5	fur returning	F	N	23	13	AVE	-	-	-	Y	-	-	-	-	-	-	-
12-10-7	1620	1620	4	back pain	F	N	23	13	AVE	1610	1830	P	N	N	N	N	N	N	N	N
12-10-7	1740	1740	3	Pricking hand heat	M	N	23	13	AVE	-	-	-	Y	N	N	Y	N	N	N	N
12-10-7	1825	1825	4	C/O sore throat	F	N	23	13	AVE	-	-	-	Y	N	N	N	N	N	N	N
12-10-7	0050	0050	5	S.O.B	M	N	23	13	AVE	-	-	-	Y	N	N	Y	N	N	N	N
2-10-7	1345	1345	5	Swelling	F	N	23	13	AVE	-	-	-	Y	-	-	-	-	-	-	-
13-10-7	1205	1205	3	laceration @ leg	F	N	23	13	AVE	1200	1250	P	N	-	-	-	-	-	-	-
13-10-7	030	030	5	laceration	M	U	23	13	AVE	1425	145	P	N	-	-	-	-	-	-	-
13-10-7	1425	1425	5	wound to foot	F	N	23	13	AVE	1425	145	P	N	-	-	-	-	-	-	-
3-10-7	1650	1650	3	Painful @ Ankle	F	N	23	13	AVE	1700	1815	P	N	-	-	-	-	-	-	-
3-10-7	1800	1800	5	Nigrihosa + Vomiting	M	N	23	13	AVE	1810	1815	P	N	N	N	N	N	N	N	N
3-10-7	1940	1940	3	Central Chest heaviness	F	N	23	13	AVE	2005	2010	P	N	Y	N	Y	N	N	N	N
3-10-7	2000	2000	4	Reddened Petis	M	N	23	13	AVE	2005	2015	P	N	N	N	N	N	N	N	N

Use Medicare card and form countries where Australia has no reciprocal agreement.



The HIA project

- Partnership with CHETRE
- Development of proposal
- Recommending changes to service models
 - Refocus on primary care
 - Close 3 EDs after hrs
 - Nurse Practitioners
 - Expand CH services
 - Use of Telehealth and IT

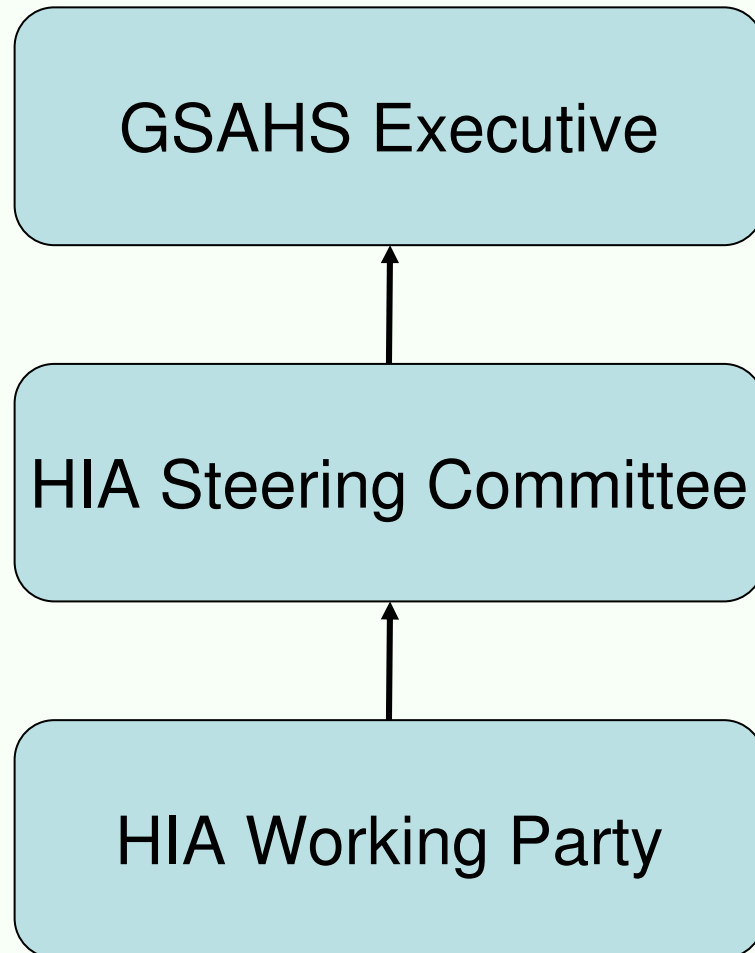


What works?

- Use of recommendations
 - Non threatening way to ‘test’ rec’s
 - Modify
 - Unintended impacts
 - Equity
- Use of evidence
 - Consideration of wider evidence base
 - Generation of new evidence
 - Different form of consultation



More of what works!



- HIA group
 - Structure
 - with large group of stakeholders
- Staying flexible!
 - Especially when environment changes around you
- Dedicated workforce
- HIA expert



What doesn't work?

- Size of HIA group
- Large stakeholder group
 - Organising 'face to face' difficult
 - Dispersed workforce
- DATA!
- Timeframes



Things we're not sure about!

- Changing political environment
- Major organisational changes
- Timeframes
 - Flexible or inflexible?
- HIA- The right methodology?
- Community consultation?



Thankyou!

